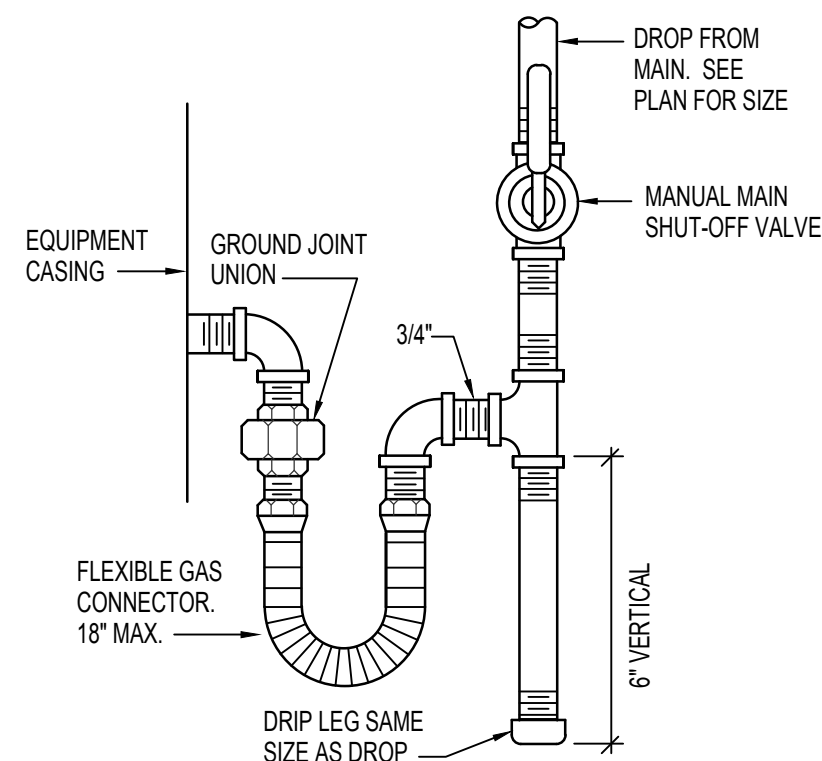
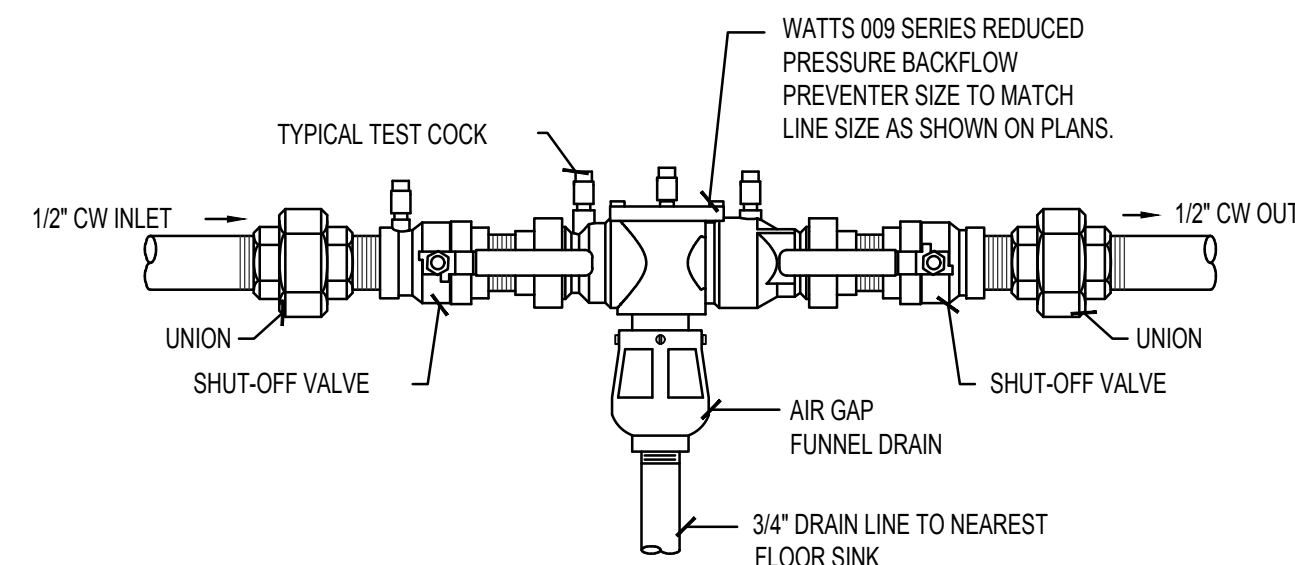


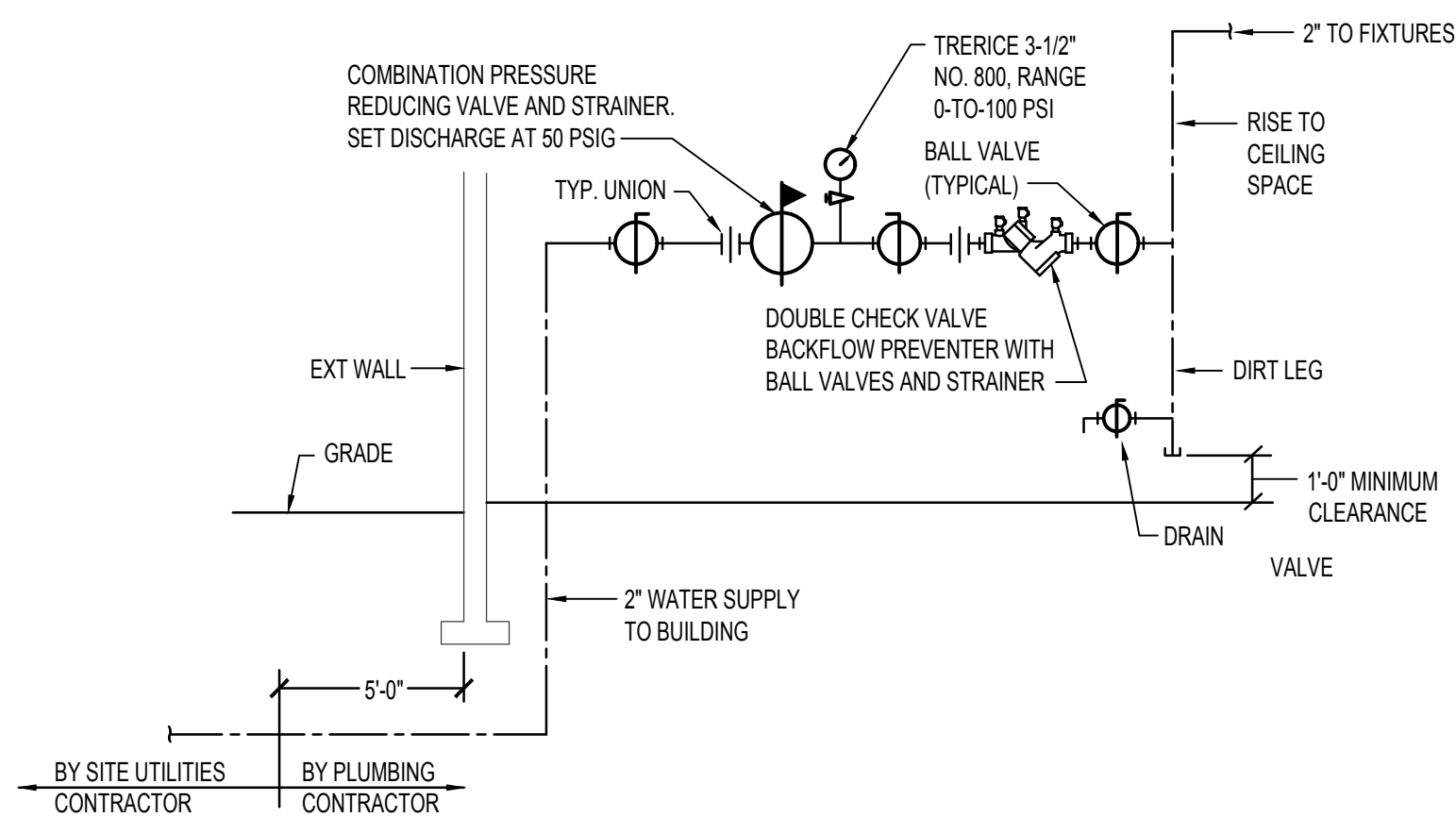
GAS FIRED WATER HEATER PIPING DIAGRAM
NO SCALE



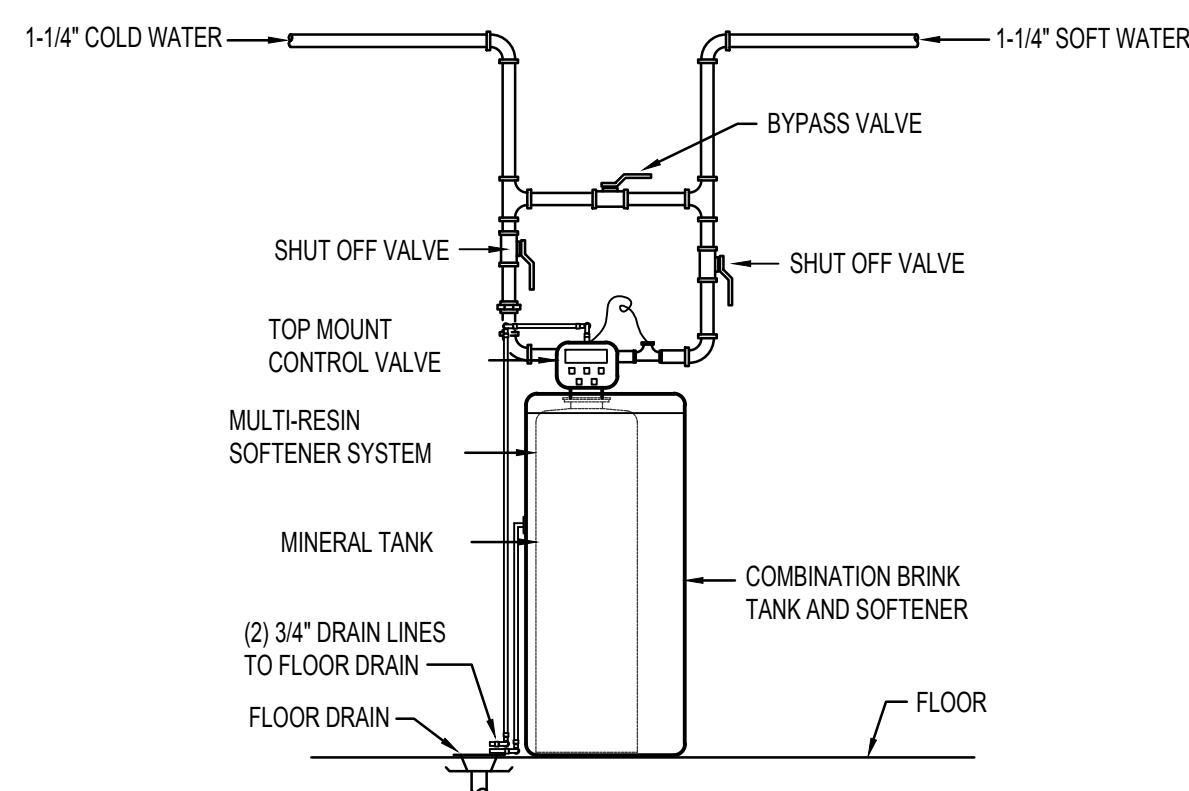
WATER HEATER GAS LINE DETAIL
NO SCALE



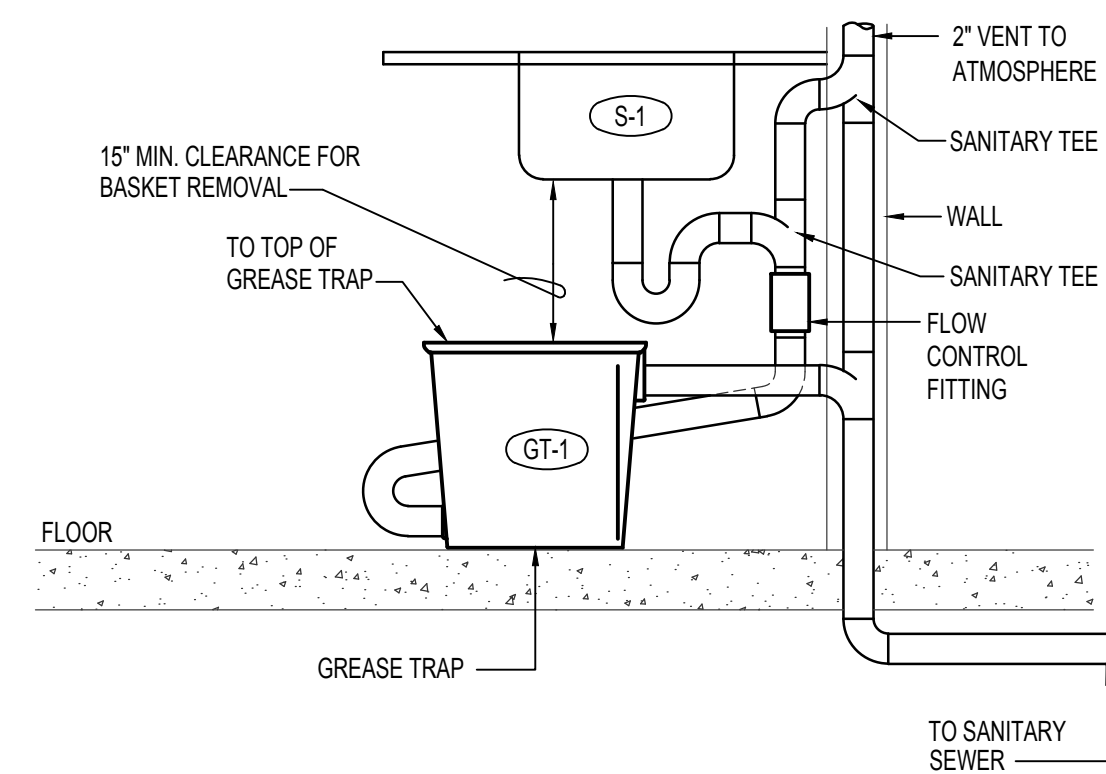
ICE MAKER BACKFLOW PREVENTER DETAIL
NO SCALE



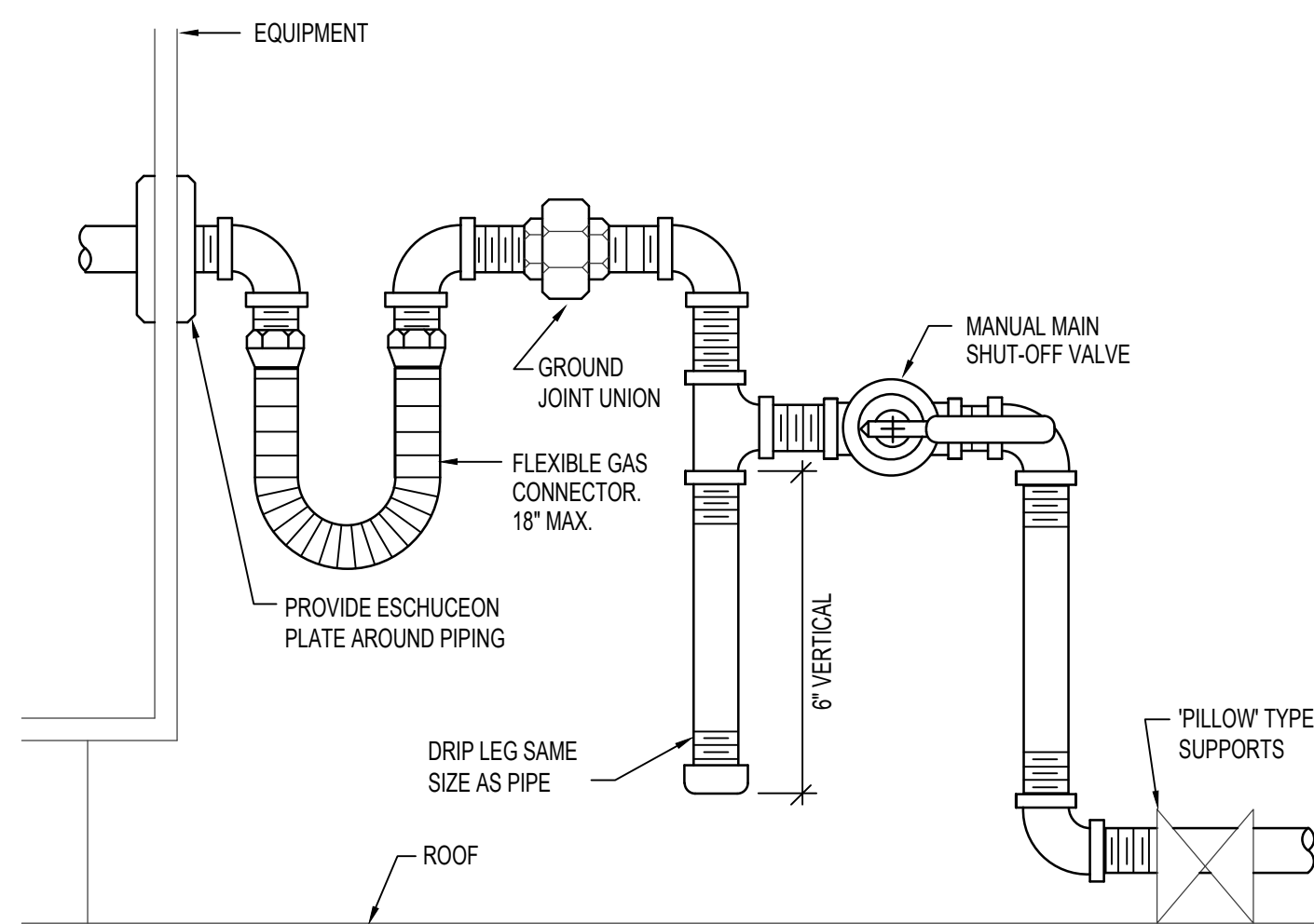
WATER PRESSURE REDUCING STATION DETAIL
NO SCALE



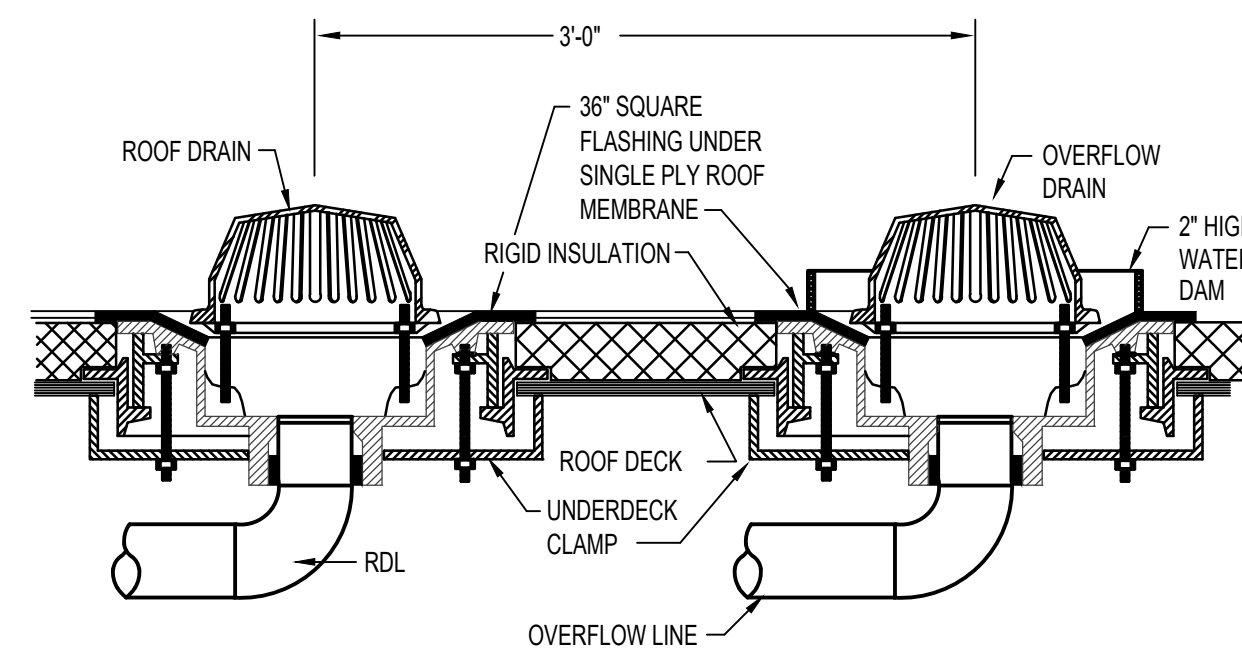
WATER SOFTENER PIPING DIAGRAM
NO SCALE



EXPOSED GREASE TRAP DETAIL
NO SCALE



ROOF TOP GAS PIPING DETAIL
NO SCALE



ROOF DRAIN DETAIL
NO SCALE

FIXTURE SCHEDULE					
SYM.	DESCRIPTION	HOT	COLD	WASTE	VENT
(D-1)	EXISTING GARBAGE DISPOSER - TO BE FURNISHED BY OWNER AND INSTALLED BY PLUMBER.	--	--	1-1/2"	1-1/2"
(DS-1)	ROOF DRAIN DOWN SPOUT - JAY R SMITH MODEL 1770 SIZE 3" WITH ROUGH BRONZE FINISH AND 3" DRAIN LINE CONNECTION.	--	--	3"	--
(DS-2)	ROOF DRAIN DOWN SPOUT - JAY R SMITH MODEL 1770 SIZE 6" WITH ROUGH BRONZE FINISH AND 6" DRAIN LINE CONNECTION.	--	--	6"	--
(DW-1)	EXISTING UNDERCOUNTER DISHWASHER - TO BE FURNISHED BY OWNER AND INSTALLED BY PLUMBING CONTRACTOR.	3/4"	--	3/4" TO (FS-2)	--
(FD-1)	2" FLOOR DRAIN WITH PRIMER - ZURN Z-415B WITH 5'0" NICKEL-BRONZE STRAINER AND 2" DEEP SEAL P-TRAP.	--	--	2"	2"
(FS-1)	FLOOR SINK - ZURN Z-1900-KC WITH WHITE ENAMEL FINISH, DOME STRAINER AND 4" DEEP SEAL P-TRAP. PROVIDE 3/4 GRATE OVER SINK.	--	--	4"	2"
(FS-2)	FLOOR SINK - ZURN Z-1900-KC WITH WHITE ENAMEL FINISH, DOME STRAINER AND 2" DEEP SEAL P-TRAP. PROVIDE 3/4 GRATE OVER SINK.	--	--	2"	2"
(GT-1)	GREASE TRAP - IPEX ENDURA (SIZE 25) 50#, 25 GPM FLOW GREASE TRAP. PROVIDE TRAP WITH FLOW CONTROL FITTING. INTERCEPTOR LID TO BE ACCESSIBLE FOR GREASE REMOVAL.	--	--	3"	2"
(HS-1)	ADA WALL MOUNTED HAND WASH SINK - KOHLER 2023 "GREENWICH" (SIZE 20"x18") WITH K-7715 OPEN GRID STRAINER, ELKAY LK406GN04T4 FAUCET. 1/2" STOPS AND 1-1/2" P-TRAP. PROVIDE INSULATING JACKET ON WATER AND WASTE PIPE. PROVIDE CONCEALED ARM CARRIER SYSTEM.	1/2"	1/2"	1-1/2"	1-1/2"
(IM-1)	ICE MAKER - PROVIDED BY OWNER. PLUMBER TO PROVIDE 1/2" CW WATER LINE WITH BACKFLOW PREVENTOR TO MACHINE WITH SHUT-OFF VALVE AND 3/8" ADAPTER. RUN 3/4" DRAIN TO FLOOR SINK WITH AIR GAP.	--	1/2"	3/4" TO (FS-1)	--
(JS-1)	FLOOR MOUNTED SERVICE SINK - KOHLER K-6710 "WHITBY" W/ K-8940 WIRE RIM GUARD, K-8928 FAUCET ASSEMBLY & K-9142 STRAINER & DEEP SEAL P-TRAP. HOSE & HOSE CLAMP.	1/2"	1/2"	2"	2"
(L-1)	ADA COUNTERTOP LAVATORY - KOHLER MODEL K-2905-4 SELF-RIMMING "FARMINGTON" WITH MOEN L4601 LEVER FAUCET, K-7715 OPEN GRID STRAINER, 1/2" BALL STOPS AND 1-1/4" P-TRAP. PROVIDE INSULATING JACKET ON HW PIPING AND P-TRAP.	1/2"	1/2"	1-1/2"	1-1/2"
(OD-1)	ROOF OVERFLOW DRAIN - JAY R SMITH MODEL 1080 SIZE 3" WITH 2" HIGH WATER DAM, UNDERDECK CLAMP AND 36" SQUARE FLASHING.	--	--	3"	--
(OD-2)	ROOF OVERFLOW DRAIN - JAY R SMITH MODEL 1080 SIZE 4" WITH 2" HIGH WATER DAM, UNDERDECK CLAMP AND 36" SQUARE FLASHING.	--	--	4"	--
(RD-1)	ROOF DRAIN - JAY R SMITH MODEL 1010 SIZE 3" WITH UNDERDECK CLAMP AND 36" SQUARE FLASHING.	--	--	3"	--
(RD-2)	ROOF DRAIN - JAY R SMITH MODEL 1010 SIZE 4" WITH UNDERDECK CLAMP AND 36" SQUARE FLASHING.	--	--	4"	--
(RP-1)	EXISTING HOT WATER CIRCULATING PUMP - RELOCATE EXISTING PUMP TO NW LOCATION AND PIPE AS SHOWN ON DETAIL ON THIS SHEET.	3/4"	HWRC	--	--
(S-1)	EXISTING TRIPLE COMPARTMENT SINK - TO BE FURNISHED BY OWNER AND INSTALLED BY PLUMBING CONTRACTOR COMPLETE WITH BALL STOP VALVES AND S.S. BRAIDED SUPPLIES AND 2" WASTE TO GREASE TRAP ON FLOOR BELOW.	1/2"	1/2"	2" TO (GT-1)	--
(S-2)	EXISTING DOUBLE COMPARTMENT SINK - TO BE FURNISHED BY OWNER AND INSTALLED BY PLUMBING CONTRACTOR COMPLETE WITH BALL STOP VALVES AND S.S. BRAIDED SUPPLIES AND 2" WASTE TO FLOOR SINK.	1/2"	1/2"	2" TO (FS-2)	--
(S-3)	CLASSROOM SINK - ELKAY PSDKAD2517C STAINLESS STEEL SINK WITH LK20853L GOOSENECK FAUCET, LK14141A FLEX GUARD BUBBLER, LK-35 STRAINER, 1/2" STOPS AND 1-1/2" P-TRAP. PROVIDE RIGHT OR LEFT HANDLE CONFIGURATION AS REQUIRED. (SEE PLANS)	1/2"	1/2"	1-1/2"	1-1/2"
(S-4)	SINGLE COMP. SINK WITH FAUCET - ELKAY MODEL LR-1918 WITH 18 GA TYPE 304 STAINLESS STEEL CONSTRUCTION, 3-HOLE FAUCET DRILLINGS, LK406GN05T4 FAUCET, LK-09 STRAINERS, 1-1/2" P-TRAP AND 1/2" BALL TYPE STOP VALVES.	1/2"	1/2"	1-1/2"	1-1/2"
(WC-1)	ADA TANK TYPE WATER CLOSET - KOHLER K-3493 "HIGHLINE" W/ ELONGATED BOWL, K-4670-C WHITE OPEN FRONT SEAT, BOLT CAPS AND 1/2" STOP VALVE. RIGHT OR LEFT HAND FLUSH LEVER SO LEVER IS ON OPEN SIDE OF ACCESSIBLE STALLS.	--	1/2"	4"	2"
(WH-1)	EXISTING GAS WATER HEATER - TO BE SUPPLIED BY OWNER AND INSTALLED BY PLUMBING CONTRACTOR. SEE DETAIL ON THIS SHEET.	3/4"	3/4"	--	--
(WS-1)	EXISTING WATER SOFTENER SYSTEM - TO BE SUPPLIED BY OWNER AND INSTALLED BY PLUMBING CONTRACTOR. SEE DETAIL ON THIS SHEET.	3/4"	3/4"	--	--

NO.	REVISIONS	DATE

This document or any part thereof in detail or design concept is the personal property of Keller Associates, Inc. and shall remain the confidential information of Keller Associates, Inc.

**SBT HRDC ROOF COLLAPSE
FORT HALL, IDAHO**
PLUMBING DETAILS & SCHEDULES

PROFESSIONAL ENGINEER REGISTERED
Dwayne C. Sudweeks
STATE OF IDAHO
DWAYNE C. SUDWEKS
Aug 13, 2020

Engineered Systems Associates
1355 EAST CENTER
POCATELLO, IDAHO 83201
PHONE: (208) 233-0501
FAX: (208) 233-0529
EMAIL: esa@engsystems.com
ESA JOB NUMBER: 19033